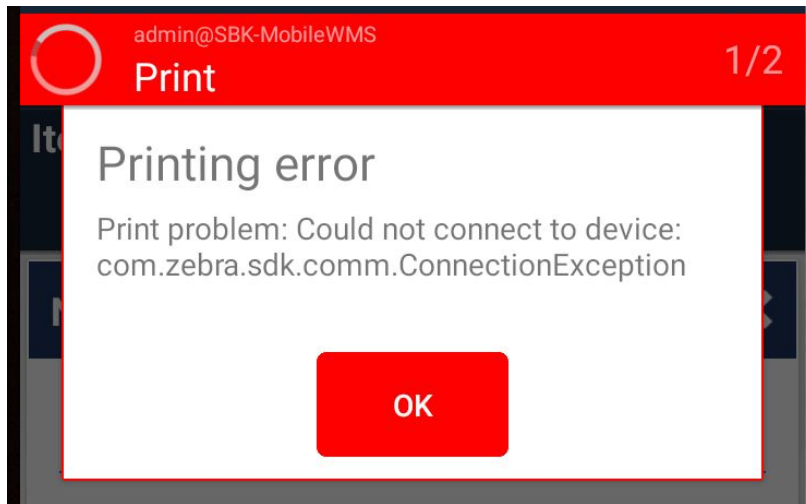


Issues printing over Bluetooth

If you have trouble printing over Bluetooth and getting error messages like this:



Here are some steps to help you resolve this issue.

Step 1)

Make sure the printer has a Bluetooth module.

To check that find the printer parts number and if it ends in 00EZ then it only has a Bluetooth Low Energy(BTLE) module and is therefore not capable of supporting prints over Bluetooth.

Step 2)

Make sure Bluetooth is enabled on the scanner you are trying to print from.

[Unlock your scanner](#) and make sure Bluetooth is enabled.

Step 3)

Make sure you are within 5 meters(16 feet) of the printer.

Bluetooth has a very limited range and the signal can be blocked easily by shelves and other materials.